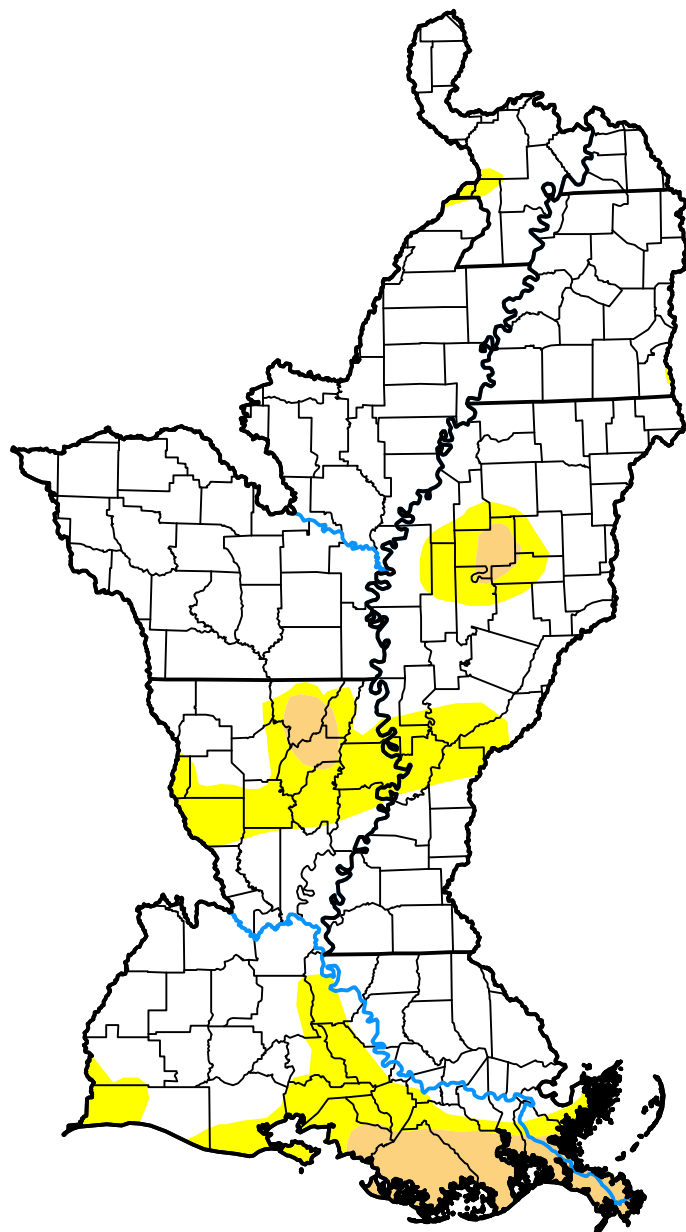


U.S. Drought Monitor

Lower Mississippi Watershed

March 9, 2021
 (Released Thursday, Mar. 11, 2021)
 Valid 7 a.m. EST



Drought Conditions (Percent Area)

	None	D0-D4	D1-D4	D2-D4	D3-D4	D4
Current	81.33	18.67	4.82	0.00	0.00	0.00
Last Week <i>03-04-2021</i>	85.03	14.97	4.82	0.00	0.00	0.00
3 Months Ago <i>12-10-2020</i>	56.36	43.64	5.32	0.00	0.00	0.00
Start of Calendar Year <i>12-31-2020</i>	47.36	52.64	5.41	0.00	0.00	0.00
Start of Water Year <i>10-01-2020</i>	96.14	3.86	0.00	0.00	0.00	0.00
One Year Ago <i>03-12-2020</i>	89.95	10.05	1.25	0.00	0.00	0.00

Intensity:



The Drought Monitor focuses on broad-scale conditions. Local conditions may vary. For more information on the Drought Monitor, go to <https://droughtmonitor.unl.edu/About.aspx>

Author:

Brian Fuchs
 National Drought Mitigation Center

