

U.S. Drought Monitor

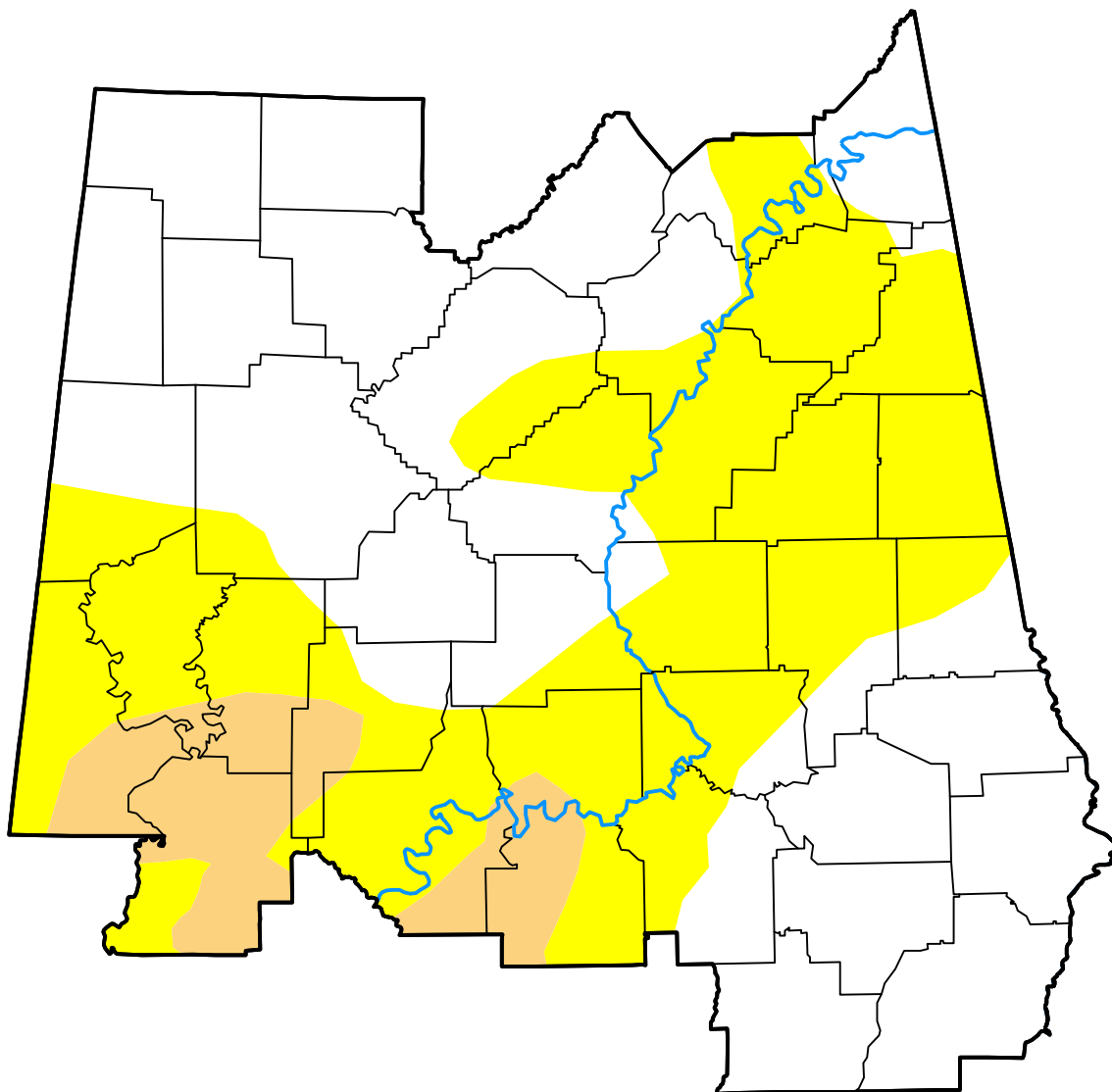
Birmingham, AL WFO

March 9, 2021
 (Released Thursday, Mar. 11, 2021)

Valid 7 a.m. EST

Drought Conditions (Percent Area)

	None	D0-D4	D1-D4	D2-D4	D3-D4	D4
Current	52.92	47.08	7.90	0.00	0.00	0.00
Last Week <i>03-04-2021</i>	68.41	31.59	7.90	0.00	0.00	0.00
3 Months Ago <i>12-10-2020</i>	94.12	5.88	0.00	0.00	0.00	0.00
Start of Calendar Year <i>12-31-2020</i>	95.42	4.58	0.00	0.00	0.00	0.00
Start of Water Year <i>10-01-2020</i>	99.01	0.99	0.00	0.00	0.00	0.00
One Year Ago <i>03-12-2020</i>	100.00	0.00	0.00	0.00	0.00	0.00



Intensity:

- None
- D0 Abnormally Dry
- D1 Moderate Drought
- D2 Severe Drought
- D3 Extreme Drought
- D4 Exceptional Drought

The Drought Monitor focuses on broad-scale conditions. Local conditions may vary. For more information on the Drought Monitor, go to <https://droughtmonitor.unl.edu/About.aspx>

Author:

Brian Fuchs
 National Drought Mitigation Center

