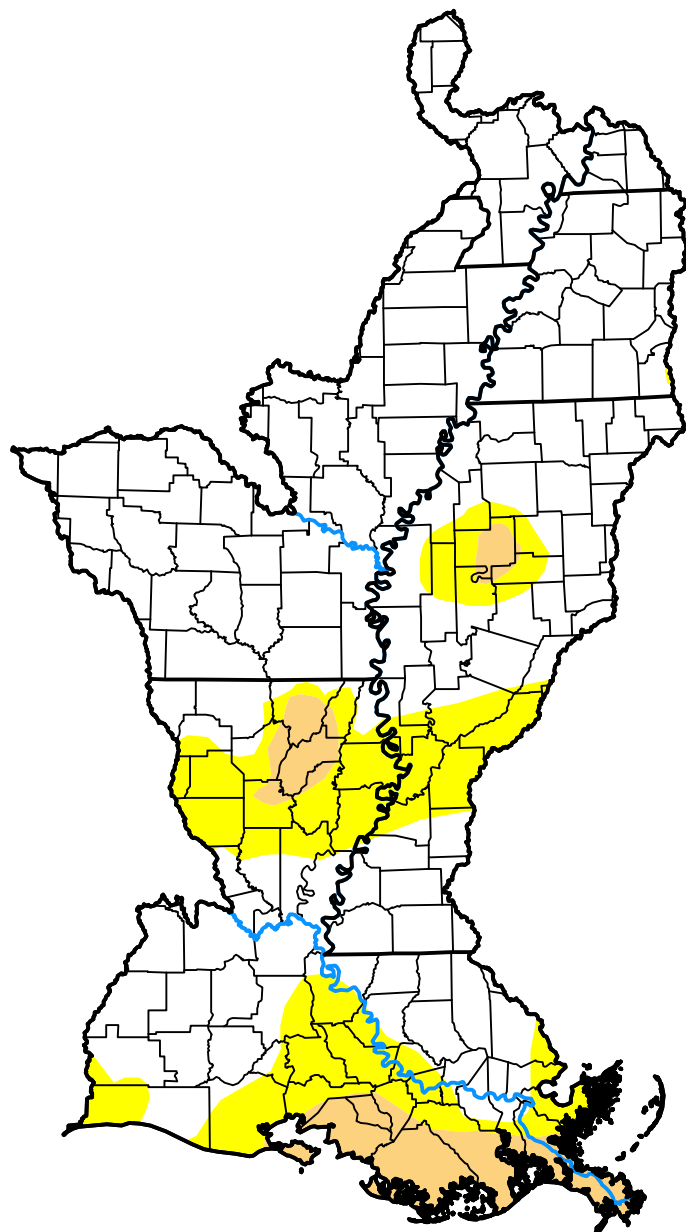


U.S. Drought Monitor

Lower Mississippi Watershed

March 16, 2021
 (Released Thursday, Mar. 18, 2021)
 Valid 8 a.m. EDT



Drought Conditions (Percent Area)

	None	D0-D4	D1-D4	D2-D4	D3-D4	D4
Current	75.62	24.38	6.47	0.00	0.00	0.00
Last Week <i>03-09-2021</i>	81.33	18.67	4.82	0.00	0.00	0.00
3 Months Ago <i>12-15-2020</i>	56.40	43.60	5.32	0.00	0.00	0.00
Start of Calendar Year <i>12-29-2020</i>	47.36	52.64	5.41	0.00	0.00	0.00
Start of Water Year <i>09-29-2020</i>	96.14	3.86	0.00	0.00	0.00	0.00
One Year Ago <i>03-17-2020</i>	88.91	11.09	1.25	0.00	0.00	0.00

Intensity:

- None
- D0 Abnormally Dry
- D1 Moderate Drought
- D2 Severe Drought
- D3 Extreme Drought
- D4 Exceptional Drought

The Drought Monitor focuses on broad-scale conditions. Local conditions may vary. For more information on the Drought Monitor, go to <https://droughtmonitor.unl.edu/About.aspx>

Author:

Brad Pugh
 CPC/NOAA



droughtmonitor.unl.edu