

U.S. Drought Monitor

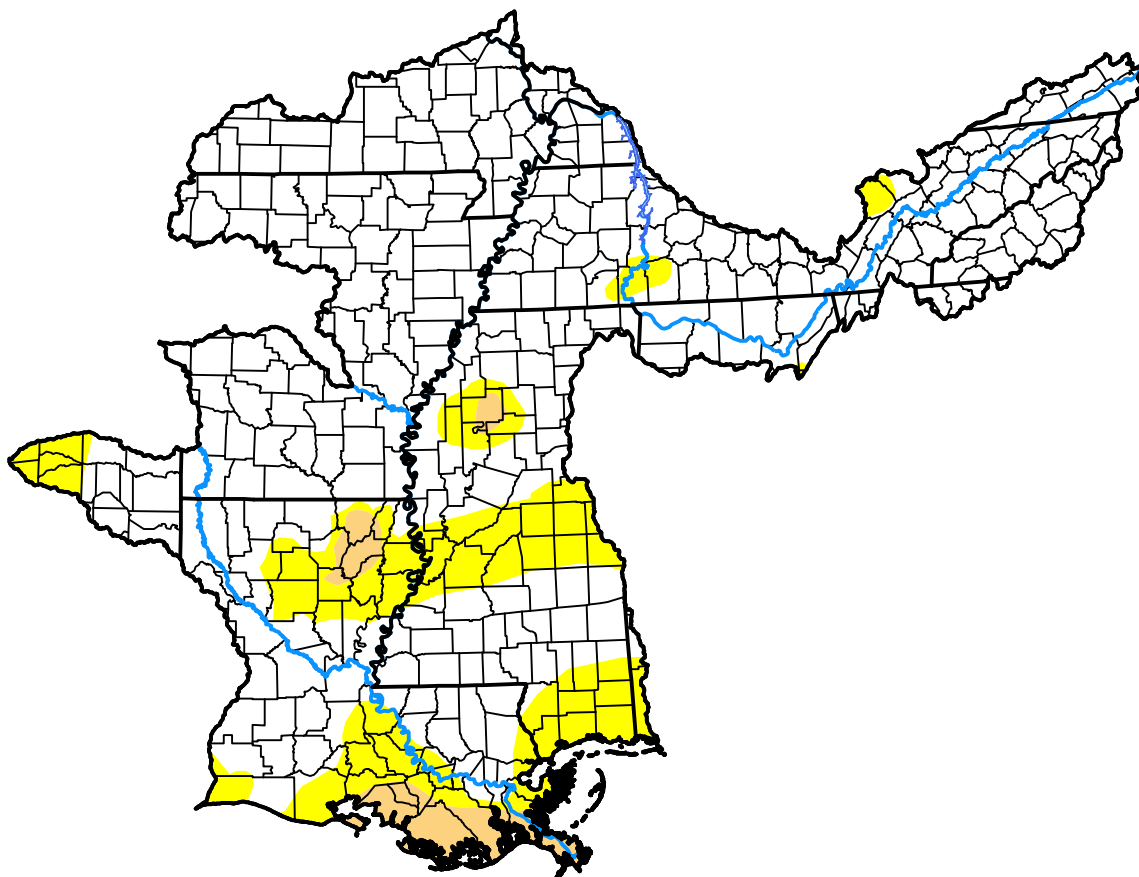
Lower Mississippi RFC

March 16, 2021
 (Released Thursday, Mar. 18, 2021)

Valid 8 a.m. EDT

Drought Conditions (Percent Area)

	None	D0-D4	D1-D4	D2-D4	D3-D4	D4
Current	81.25	18.75	3.21	0.00	0.00	0.00
Last Week <i>03-09-2021</i>	82.05	17.95	2.38	0.00	0.00	0.00
3 Months Ago <i>12-15-2020</i>	67.89	32.11	5.75	0.00	0.00	0.00
Start of Calendar Year <i>12-29-2020</i>	60.40	39.60	5.93	0.00	0.00	0.00
Start of Water Year <i>09-29-2020</i>	91.29	8.71	1.36	0.71	0.00	0.00
One Year Ago <i>03-17-2020</i>	92.93	7.07	0.62	0.00	0.00	0.00



Intensity:

- None
- D0 Abnormally Dry
- D1 Moderate Drought
- D2 Severe Drought
- D3 Extreme Drought
- D4 Exceptional Drought

The Drought Monitor focuses on broad-scale conditions. Local conditions may vary. For more information on the Drought Monitor, go to <https://droughtmonitor.unl.edu/About.aspx>

Author:

Brad Pugh
 CPC/NOAA

