

U.S. Drought Monitor

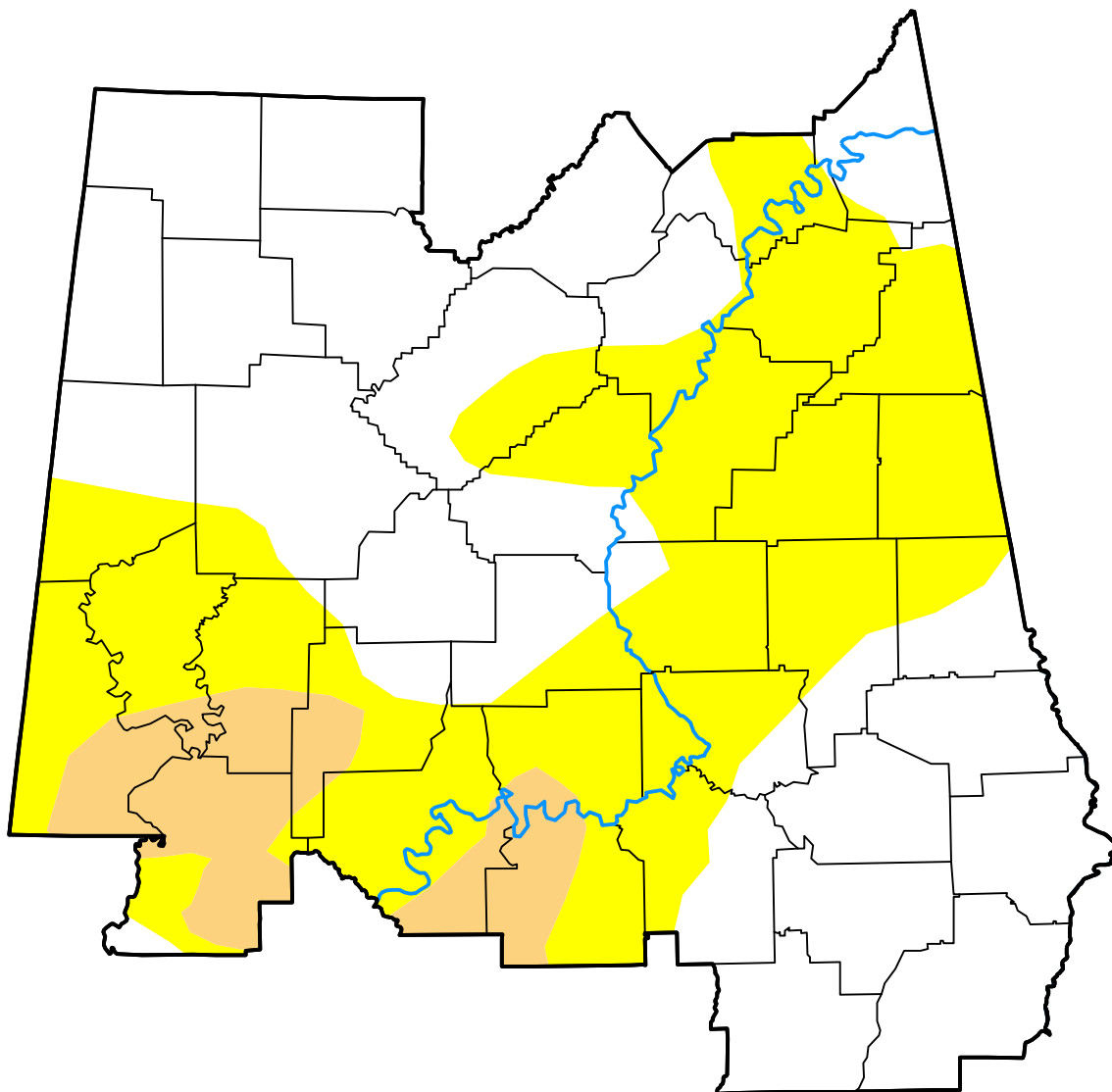
Birmingham, AL WFO

March 16, 2021
(Released Thursday, Mar. 18, 2021)

Valid 8 a.m. EDT

Drought Conditions (Percent Area)

	None	D0	D1	D2	D3	D4
Current	52.84	39.18	7.98	0.00	0.00	0.00
Last Week <i>03-09-2021</i>	52.92	39.18	7.90	0.00	0.00	0.00
3 Months Ago <i>12-15-2020</i>	92.97	7.03	0.00	0.00	0.00	0.00
Start of Calendar Year <i>12-29-2020</i>	95.42	4.58	0.00	0.00	0.00	0.00
Start of Water Year <i>09-29-2020</i>	99.01	0.99	0.00	0.00	0.00	0.00
One Year Ago <i>03-17-2020</i>	100.00	0.00	0.00	0.00	0.00	0.00



Intensity:

- None
- D0 Abnormally Dry
- D1 Moderate Drought
- D2 Severe Drought
- D3 Extreme Drought
- D4 Exceptional Drought

The Drought Monitor focuses on broad-scale conditions. Local conditions may vary. For more information on the Drought Monitor, go to <https://droughtmonitor.unl.edu/About.aspx>

Author:

Brad Pugh
 CPC/NOAA

