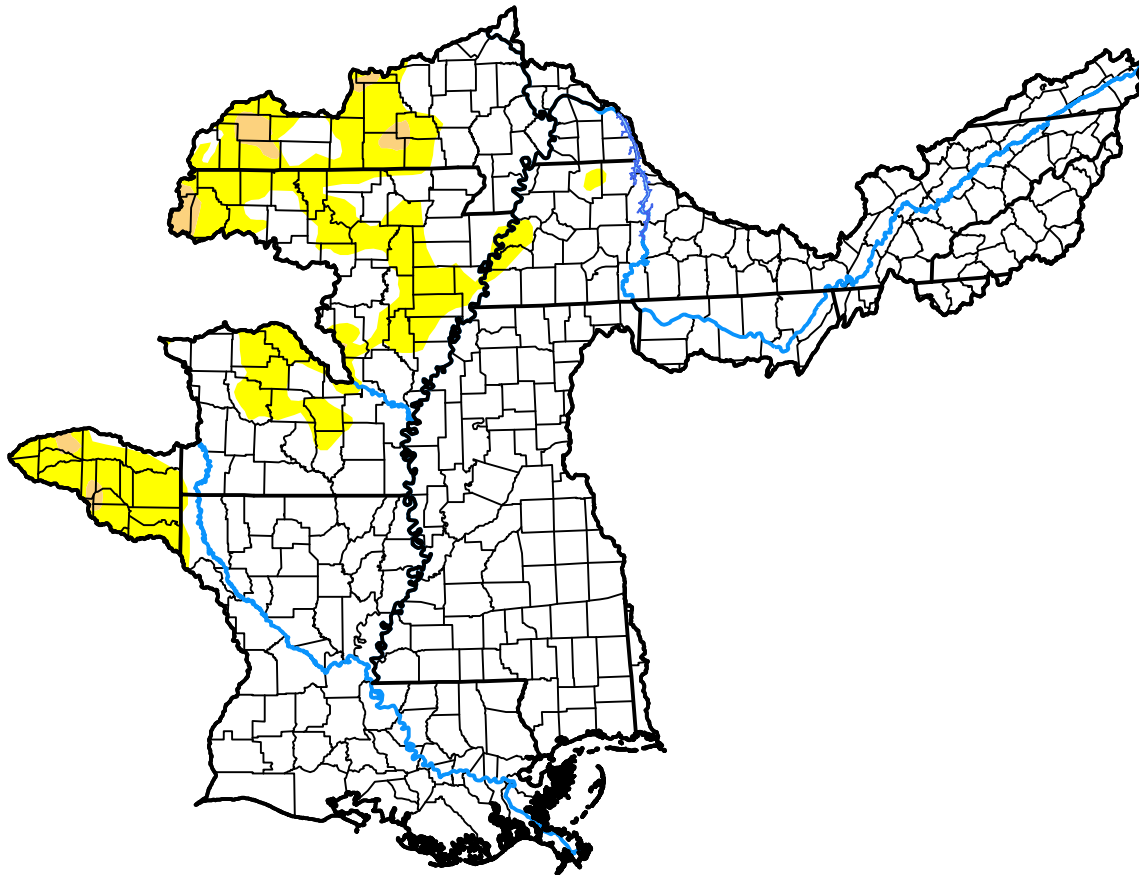


U.S. Drought Monitor

Lower Mississippi RFC

October 5, 2021
 (Released Thursday, Oct. 7, 2021)
 Valid 8 a.m. EDT



Drought Conditions (Percent Area)

	None	D0	D1	D2	D3	D4
Current	85.39	13.48	1.12	0.00	0.00	0.00
Last Week <i>09-28-2021</i>	83.69	15.16	1.14	0.00	0.00	0.00
3 Months Ago <i>07-06-2021</i>	96.01	3.99	0.00	0.00	0.00	0.00
Start of Calendar Year <i>12-29-2020</i>	60.40	33.67	5.93	0.00	0.00	0.00
Start of Water Year <i>09-28-2021</i>	83.69	15.16	1.14	0.00	0.00	0.00
One Year Ago <i>10-06-2020</i>	90.27	8.32	0.62	0.51	0.27	0.00

Intensity:



The Drought Monitor focuses on broad-scale conditions. Local conditions may vary. For more information on the Drought Monitor, go to <https://droughtmonitor.unl.edu/About.aspx>

Author:

Brian Fuchs
 National Drought Mitigation Center

