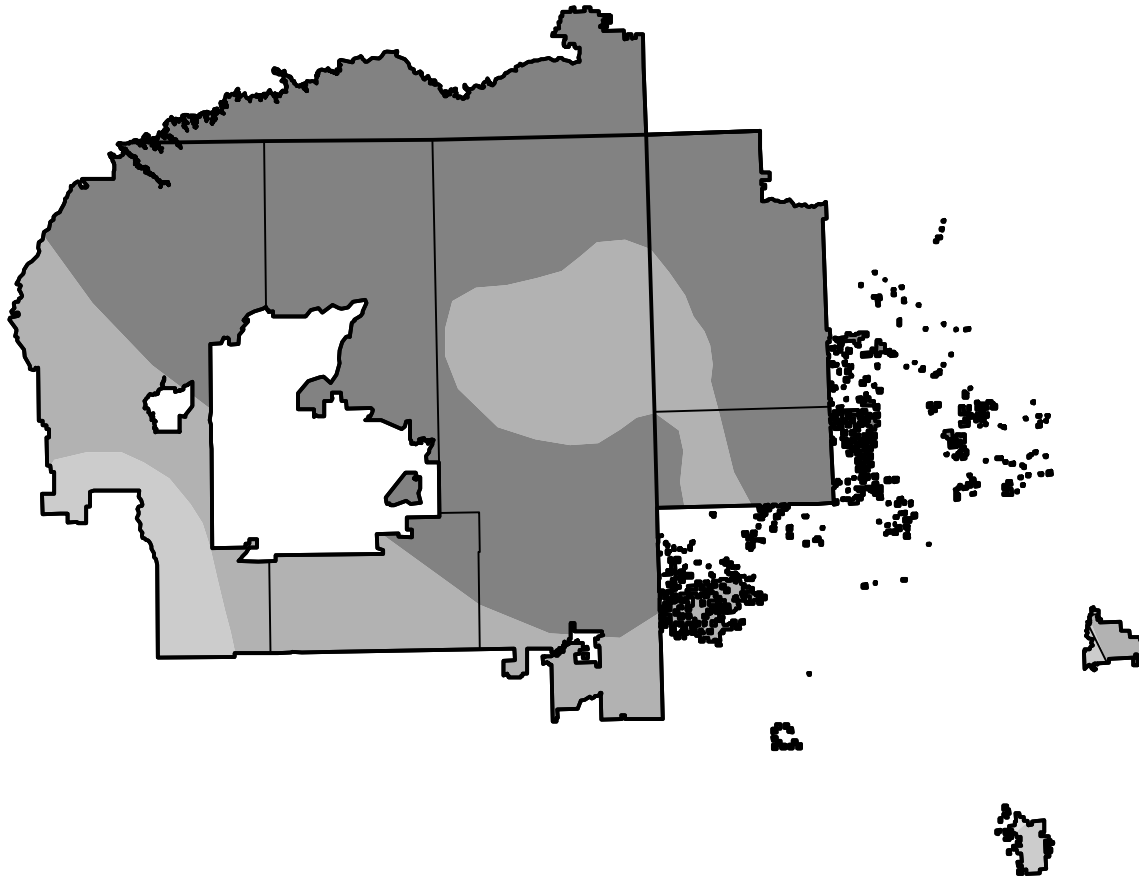


# U.S. Drought Monitor

## Navajo Nation Reservation

**October 5, 2021**  
 (Released Thursday, Oct. 7, 2021)  
 Valid 8 a.m. EDT



*Drought Conditions (Percent Area)*

	None	D0	D1	D2	D3	D4
<b>Current</b>	0.00	0.07	4.78	29.84	65.31	0.00
<b>Last Week</b> <i>09-28-2021</i>	0.00	0.00	4.85	28.26	66.89	0.00
<b>3 Months Ago</b> <i>07-06-2021</i>	0.00	0.00	0.00	4.16	31.46	64.38
<b>Start of Calendar Year</b> <i>12-29-2020</i>	0.00	0.00	0.00	0.99	22.19	76.82
<b>Start of Water Year</b> <i>09-28-2021</i>	0.00	0.00	4.85	28.26	66.89	0.00
<b>One Year Ago</b> <i>10-06-2020</i>	0.00	0.00	0.53	39.34	59.86	0.28

*Intensity:*



*The Drought Monitor focuses on broad-scale conditions. Local conditions may vary. For more information on the Drought Monitor, go to <https://droughtmonitor.unl.edu/About.aspx>*

*Author:*

Brian Fuchs  
 National Drought Mitigation Center



[droughtmonitor.unl.edu](https://droughtmonitor.unl.edu)