

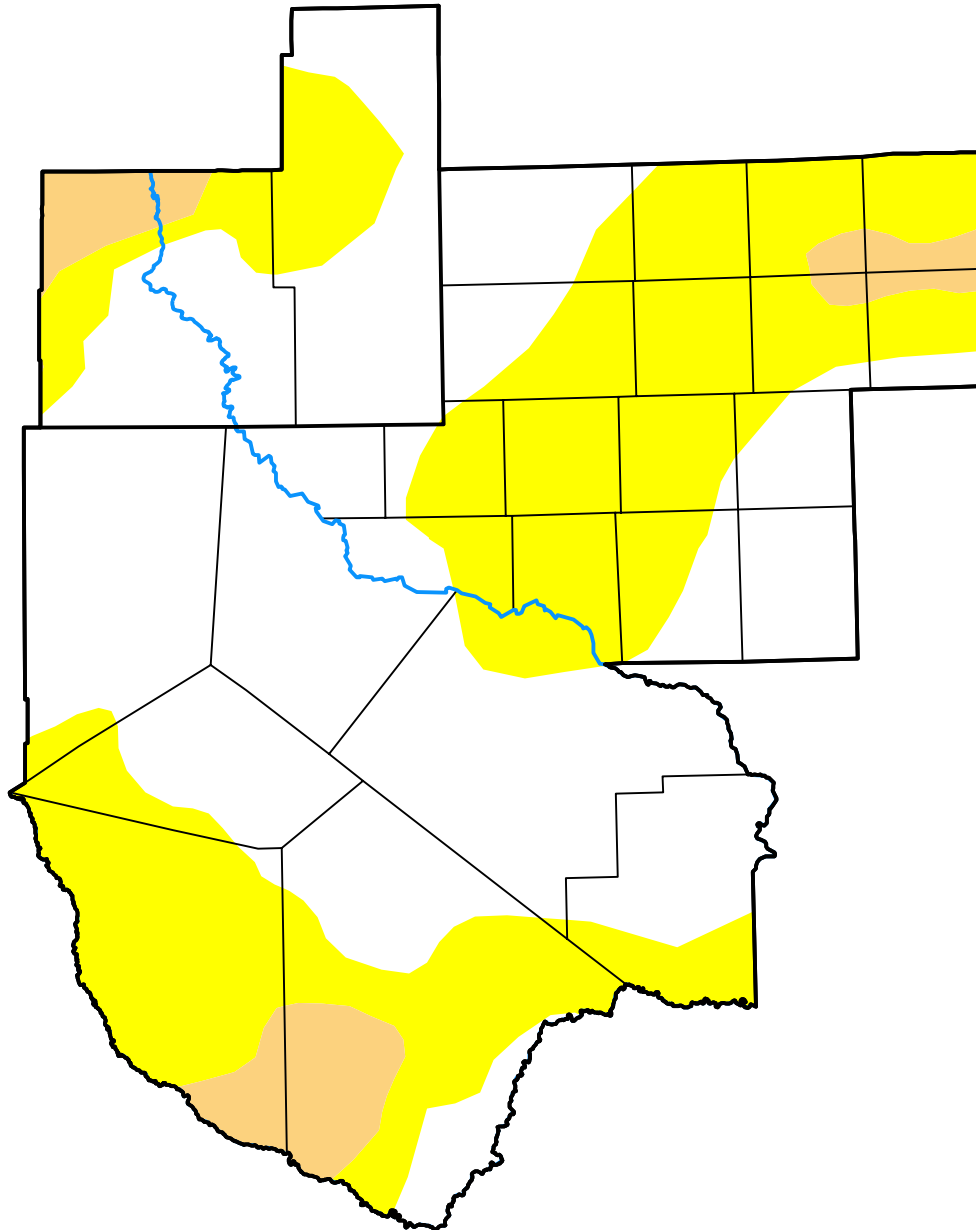
U.S. Drought Monitor

Midland/Odessa, TX WFO

October 5, 2021
 (Released Thursday, Oct. 7, 2021)
 Valid 8 a.m. EDT

Drought Conditions (Percent Area)

	None	D0-D4	D1-D4	D2-D4	D3-D4	D4
Current	54.89	45.11	6.01	0.00	0.00	0.00
Last Week <i>09-28-2021</i>	50.42	49.58	6.82	0.00	0.00	0.00
3 Months Ago <i>07-06-2021</i>	44.34	55.66	38.67	12.38	2.98	0.11
Start of Calendar Year <i>12-29-2020</i>	0.00	100.00	100.00	96.08	88.91	69.51
Start of Water Year <i>09-28-2021</i>	50.42	49.58	6.82	0.00	0.00	0.00
One Year Ago <i>10-06-2020</i>	3.06	96.94	94.64	80.93	57.41	12.37



Intensity:

- None
- D0 Abnormally Dry
- D1 Moderate Drought
- D2 Severe Drought
- D3 Extreme Drought
- D4 Exceptional Drought

The Drought Monitor focuses on broad-scale conditions. Local conditions may vary. For more information on the Drought Monitor, go to <https://droughtmonitor.unl.edu/About.aspx>

Author:

Brian Fuchs
 National Drought Mitigation Center

