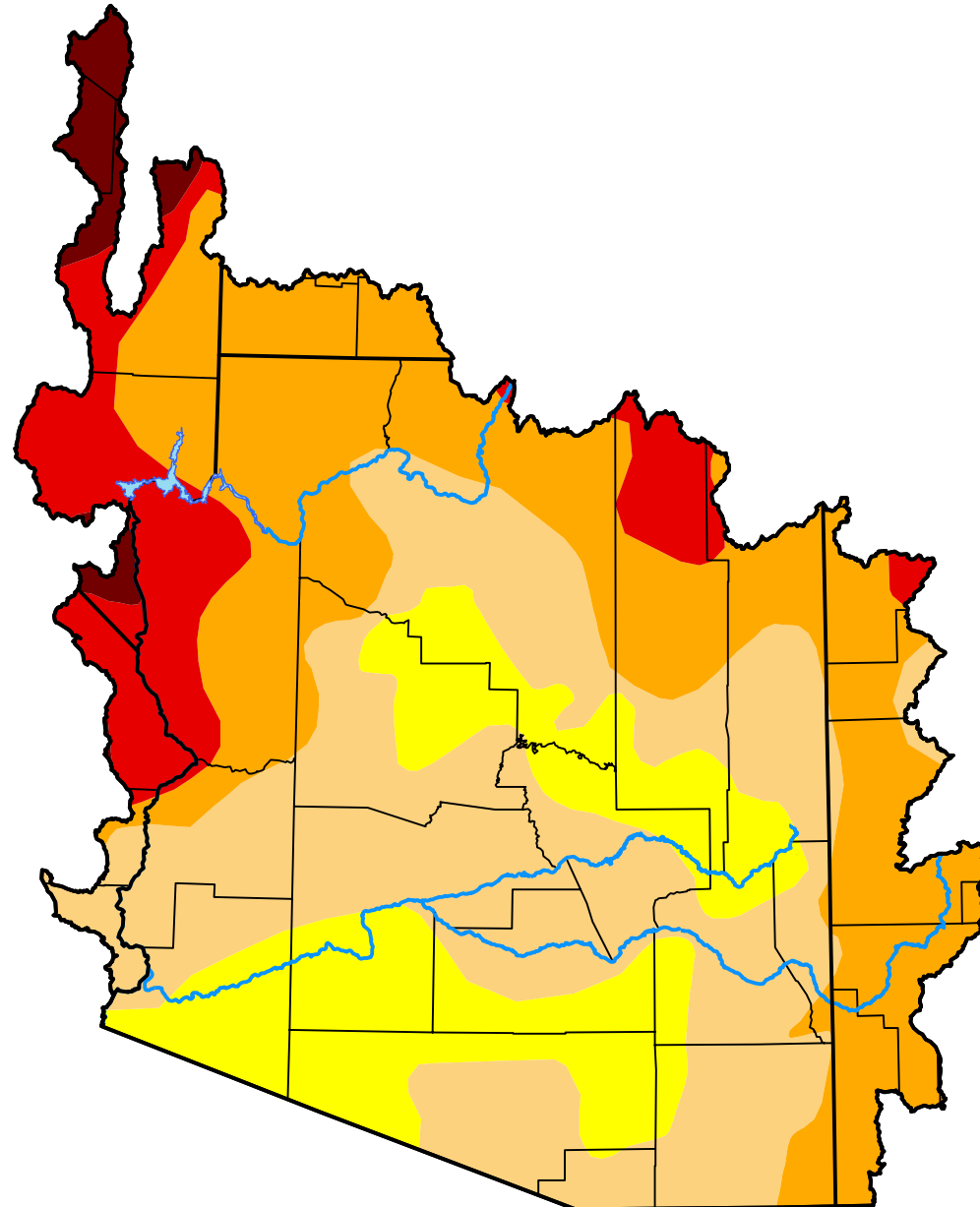


U.S. Drought Monitor

Lower Colorado Watershed

October 19, 2021
 (Released Thursday, Oct. 21, 2021)
 Valid 8 a.m. EDT



Drought Conditions (Percent Area)

| | None | D0 | D1 | D2 | D3 | D4 |
|--|------|-------|-------|-------|-------|-------|
| Current | 0.00 | 18.85 | 36.44 | 32.14 | 10.28 | 2.29 |
| Last Week <i>10-12-2021</i> | 0.00 | 18.85 | 36.13 | 32.45 | 10.28 | 2.29 |
| 3 Months Ago <i>07-20-2021</i> | 0.00 | 0.87 | 3.79 | 9.00 | 38.73 | 47.61 |
| Start of Calendar Year <i>12-29-2020</i> | 0.00 | 0.00 | 1.35 | 4.39 | 19.44 | 74.81 |
| Start of Water Year <i>09-28-2021</i> | 0.00 | 15.96 | 34.29 | 30.51 | 16.95 | 2.29 |
| One Year Ago <i>10-20-2020</i> | 0.00 | 0.00 | 6.16 | 12.90 | 71.01 | 9.93 |

Intensity:

- None
- D0 Abnormally Dry
- D1 Moderate Drought
- D2 Severe Drought
- D3 Extreme Drought
- D4 Exceptional Drought

The Drought Monitor focuses on broad-scale conditions. Local conditions may vary. For more information on the Drought Monitor, go to <https://droughtmonitor.unl.edu/About.aspx>

Author:

Brad Pugh
 CPC/NOAA

