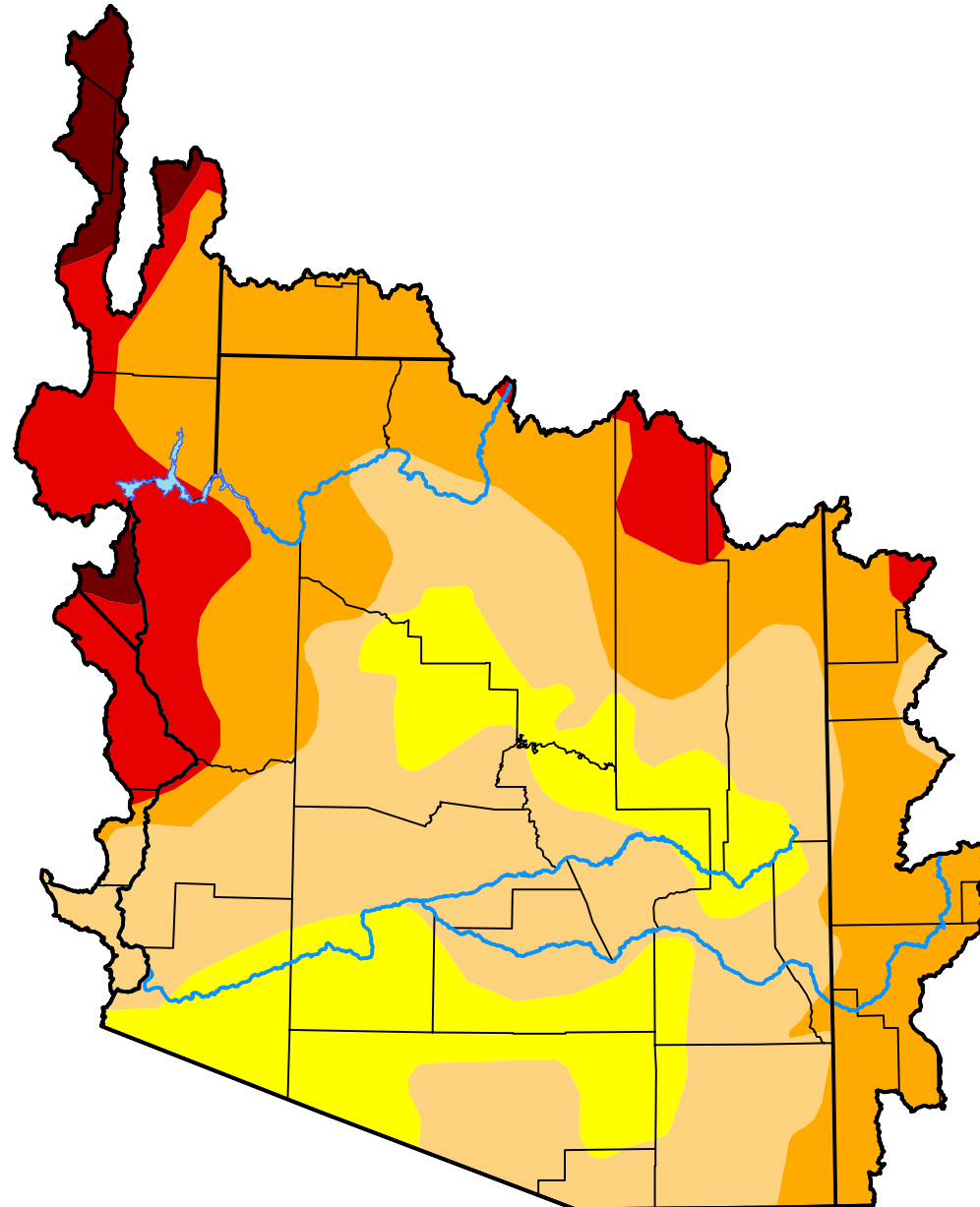


# U.S. Drought Monitor

## Lower Colorado Watershed

**October 19, 2021**  
 (Released Thursday, Oct. 21, 2021)  
 Valid 8 a.m. EDT



*Drought Conditions (Percent Area)*

	None	D0-D4	D1-D4	D2-D4	D3-D4	D4
<b>Current</b>	0.00	100.00	81.15	44.71	12.57	2.29
<b>Last Week</b> <i>10-12-2021</i>	0.00	100.00	81.15	45.02	12.57	2.29
<b>3 Months Ago</b> <i>07-20-2021</i>	0.00	100.00	99.13	95.34	86.34	47.61
<b>Start of Calendar Year</b> <i>12-29-2020</i>	0.00	100.00	100.00	98.65	94.26	74.81
<b>Start of Water Year</b> <i>09-28-2021</i>	0.00	100.00	84.04	49.75	19.24	2.29
<b>One Year Ago</b> <i>10-20-2020</i>	0.00	100.00	100.00	93.84	80.94	9.93

Intensity:



*The Drought Monitor focuses on broad-scale conditions. Local conditions may vary. For more information on the Drought Monitor, go to <https://droughtmonitor.unl.edu/About.aspx>*

Author:

Brad Pugh  
 CPC/NOAA

