

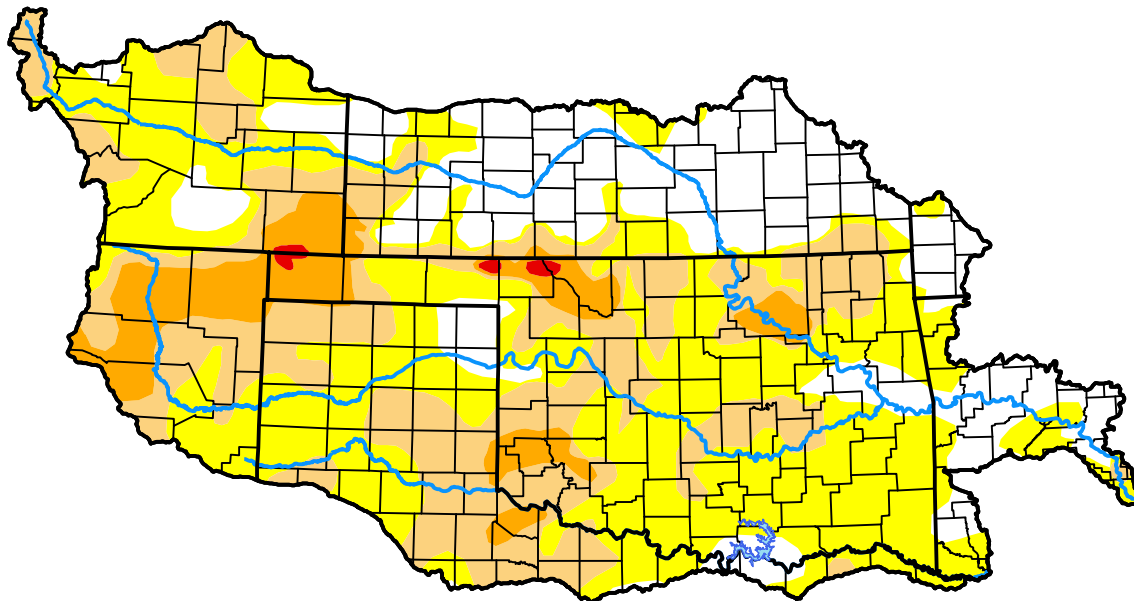
U.S. Drought Monitor

Arkansas Red Basin RFC

October 19, 2021
(Released Thursday, Oct. 21, 2021)
 Valid 8 a.m. EDT

Drought Conditions (Percent Area)

	None	D0-D4	D1-D4	D2-D4	D3-D4	D4
Current	23.71	76.29	34.51	8.63	0.32	0.00
Last Week <i>10-12-2021</i>	20.59	79.41	41.53	11.64	0.57	0.00
3 Months Ago <i>07-20-2021</i>	83.28	16.72	4.80	1.53	0.00	0.00
Start of Calendar Year <i>12-29-2020</i>	33.18	66.82	47.91	30.49	18.01	2.84
Start of Water Year <i>09-28-2021</i>	23.45	76.55	41.66	11.08	0.88	0.00
One Year Ago <i>10-20-2020</i>	20.72	79.28	59.94	37.24	19.14	0.79



Intensity:



The Drought Monitor focuses on broad-scale conditions. Local conditions may vary. For more information on the Drought Monitor, go to <https://droughtmonitor.unl.edu/About.aspx>

Author:

Brad Pugh
 CPC/NOAA



droughtmonitor.unl.edu