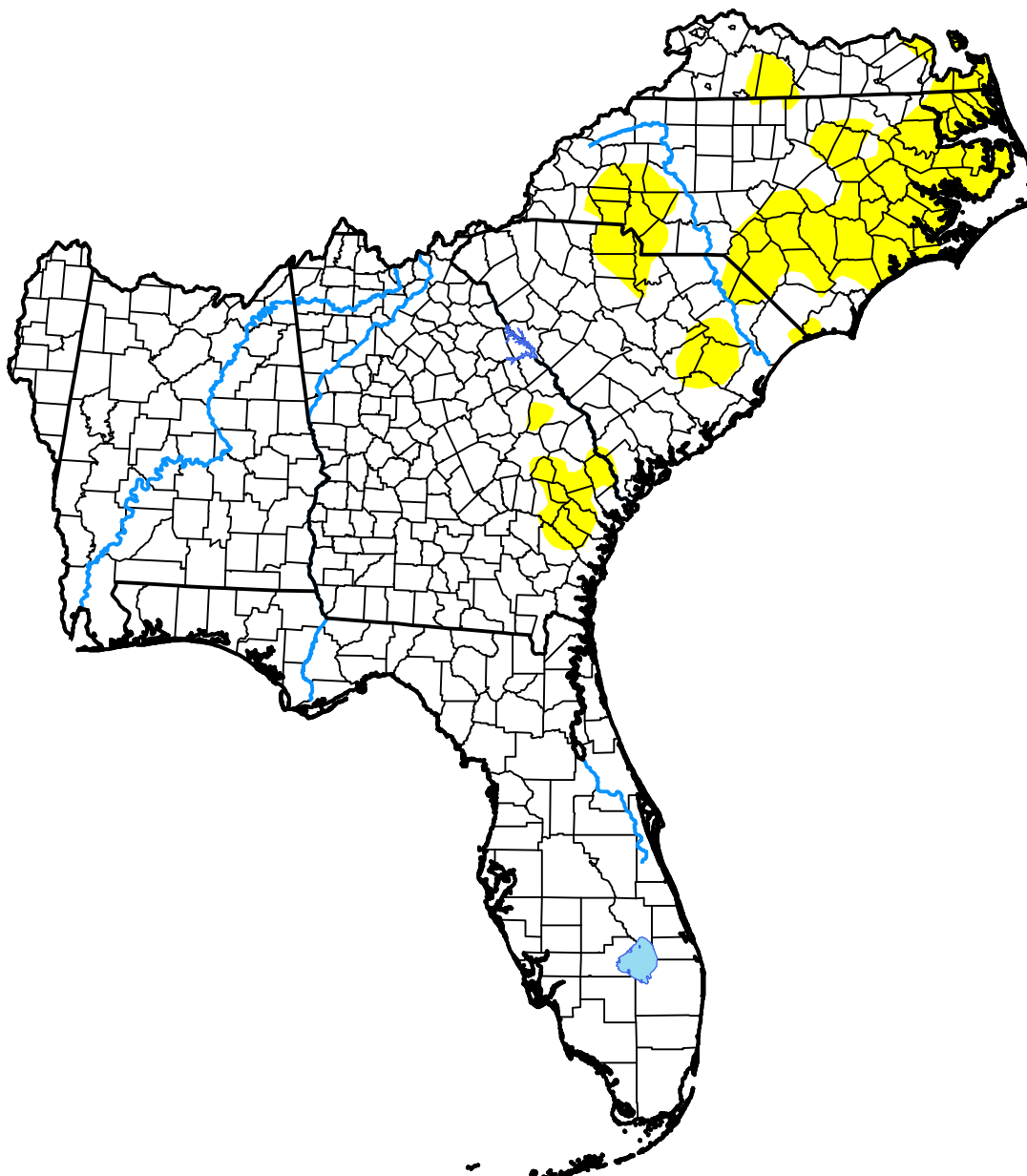


U.S. Drought Monitor Southeast RFC

October 19, 2021
(Released Thursday, Oct. 21, 2021)

Valid 8 a.m. EDT



Drought Conditions (Percent Area)

	None	D0	D1	D2	D3	D4
Current	87.24	12.76	0.00	0.00	0.00	0.00
Last Week <i>10-12-2021</i>	89.37	10.63	0.00	0.00	0.00	0.00
3 Months Ago <i>07-20-2021</i>	92.35	7.65	0.00	0.00	0.00	0.00
Start of Calendar Year <i>12-29-2020</i>	86.09	13.91	0.00	0.00	0.00	0.00
Start of Water Year <i>09-28-2021</i>	97.67	2.33	0.00	0.00	0.00	0.00
One Year Ago <i>10-20-2020</i>	96.30	3.70	0.00	0.00	0.00	0.00

Intensity:



The Drought Monitor focuses on broad-scale conditions. Local conditions may vary. For more information on the Drought Monitor, go to <https://droughtmonitor.unl.edu/About.aspx>

Author:

Brad Pugh
CPC/NOAA



droughtmonitor.unl.edu