

U.S. Drought Monitor

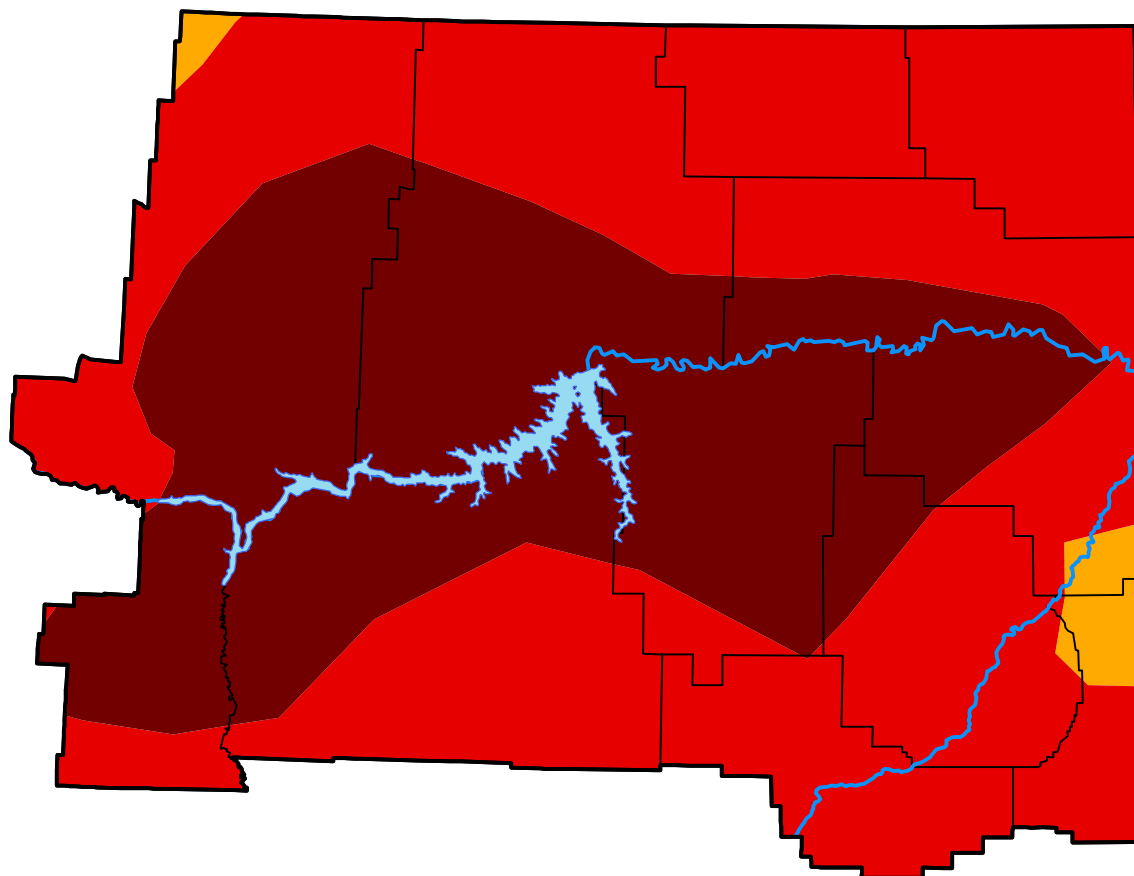
Glasgow, MT WFO

October 19, 2021
(Released Thursday, Oct. 21, 2021)

Valid 8 a.m. EDT

Drought Conditions (Percent Area)

	None	D0-D4	D1-D4	D2-D4	D3-D4	D4
Current	0.00	100.00	100.00	100.00	98.18	42.69
Last Week <i>10-12-2021</i>	0.00	100.00	100.00	100.00	99.67	55.66
3 Months Ago <i>07-20-2021</i>	0.00	100.00	100.00	100.00	69.53	14.95
Start of Calendar Year <i>12-29-2020</i>	33.51	66.49	33.60	16.98	0.00	0.00
Start of Water Year <i>09-28-2021</i>	0.00	100.00	100.00	100.00	99.67	55.65
One Year Ago <i>10-20-2020</i>	0.00	100.00	31.11	16.74	0.00	0.00



Intensity:

- None
- D0 Abnormally Dry
- D1 Moderate Drought
- D2 Severe Drought
- D3 Extreme Drought
- D4 Exceptional Drought

The Drought Monitor focuses on broad-scale conditions. Local conditions may vary. For more information on the Drought Monitor, go to <https://droughtmonitor.unl.edu/About.aspx>

Author:

Brad Pugh
 CPC/NOAA



droughtmonitor.unl.edu