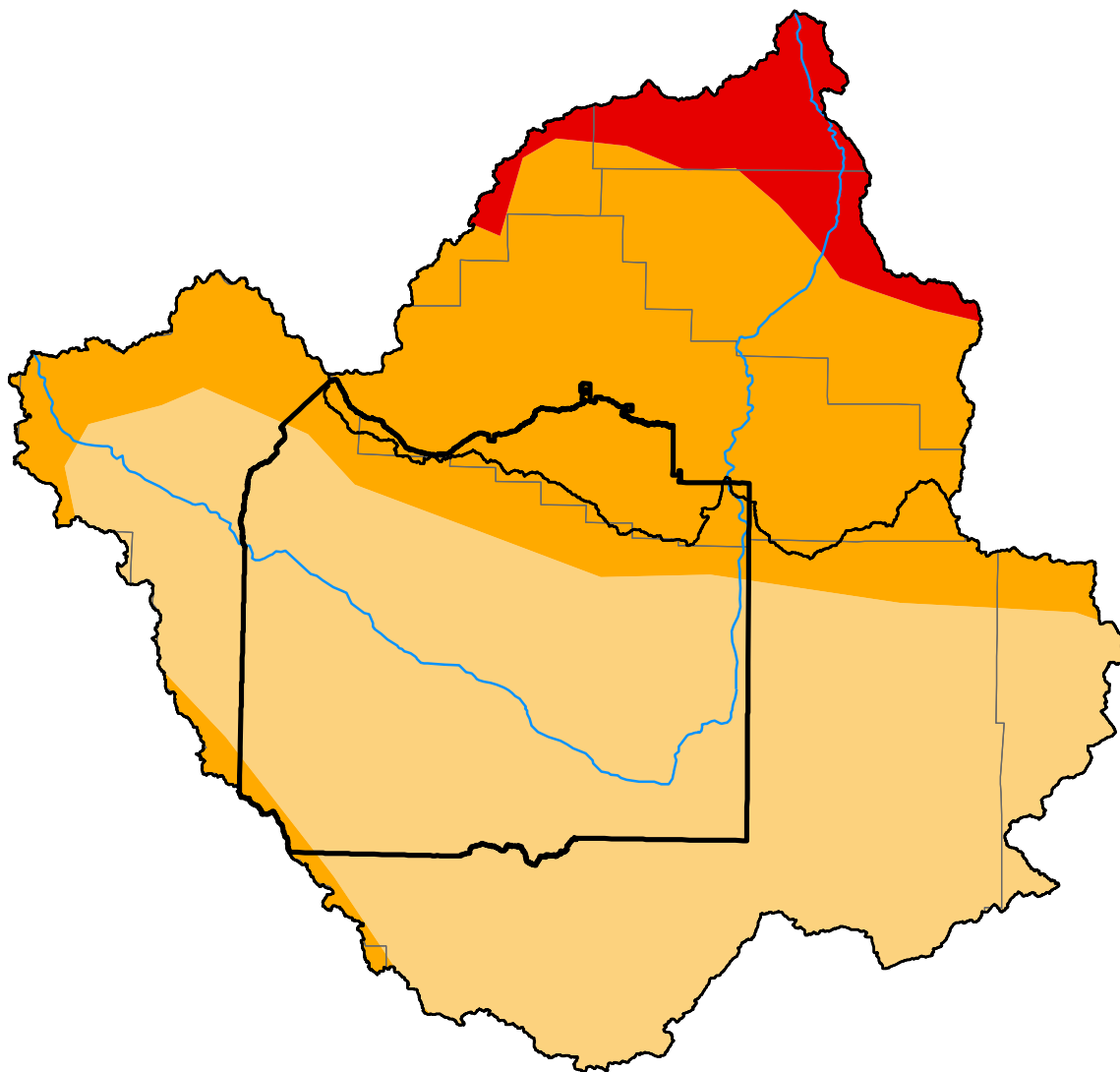


U.S. Drought Monitor

Wind River and Surrounding Area

October 19, 2021
 (Released Thursday, Oct. 21, 2021)
 Valid 8 a.m. EDT



Drought Conditions (Percent Area)

	None	D0	D1	D2	D3	D4
Current	0.00	0.00	56.21	38.12	5.67	0.00
Last Week <i>10-12-2021</i>	0.00	0.00	55.34	38.99	5.67	0.00
3 Months Ago <i>07-20-2021</i>	0.00	35.02	55.12	7.03	2.83	0.00
Start of Calendar Year <i>12-29-2020</i>	0.45	12.65	25.32	13.80	47.78	0.00
Start of Water Year <i>09-28-2021</i>	0.00	0.00	55.34	38.99	5.67	0.00
One Year Ago <i>10-20-2020</i>	0.00	13.10	25.50	13.63	47.78	0.00

Note: Statistics are for the surrounding area including the reservation.

Intensity:

- None
- D0 Abnormally Dry
- D1 Moderate Drought
- D2 Severe Drought
- D3 Extreme Drought
- D4 Exceptional Drought

The Drought Monitor focuses on broad-scale conditions. Local conditions may vary. For more information on the Drought Monitor, go to <https://droughtmonitor.unl.edu/About.aspx>

Author:

Brad Pugh
 CPC/NOAA

