

U.S. Drought Monitor

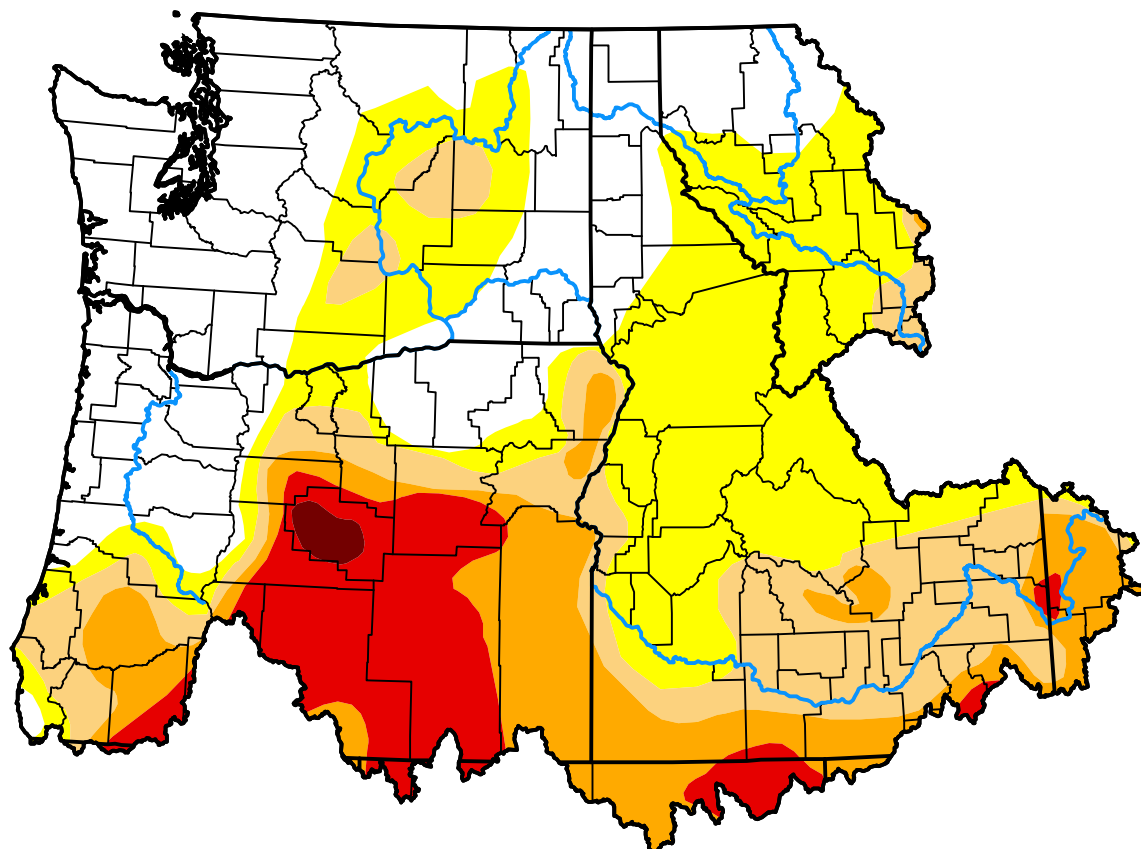
Pacific Northwest Watershed

August 23, 2022
 (Released Thursday, Aug. 25, 2022)

Valid 8 a.m. EDT

Drought Conditions (Percent Area)

	None	D0	D1	D2	D3	D4
Current	32.40	28.33	15.78	13.20	9.79	0.49
Last Week <i>08-16-2022</i>	38.38	22.35	15.78	13.20	9.79	0.49
3 Months Ago <i>05-24-2022</i>	26.07	15.54	18.80	21.54	14.00	4.05
Start of Calendar Year <i>01-04-2022</i>	15.86	8.06	28.43	27.71	14.82	5.11
Start of Water Year <i>09-28-2021</i>	0.00	6.63	9.05	29.31	32.42	22.60
One Year Ago <i>08-24-2021</i>	0.00	5.78	9.14	27.97	33.72	23.39



Intensity:

- None
- D0 Abnormally Dry
- D1 Moderate Drought
- D2 Severe Drought
- D3 Extreme Drought
- D4 Exceptional Drought

The Drought Monitor focuses on broad-scale conditions. Local conditions may vary. For more information on the Drought Monitor, go to <https://droughtmonitor.unl.edu/About.aspx>

Author:

Deborah Bathke
 National Drought Mitigation Center



droughtmonitor.unl.edu