

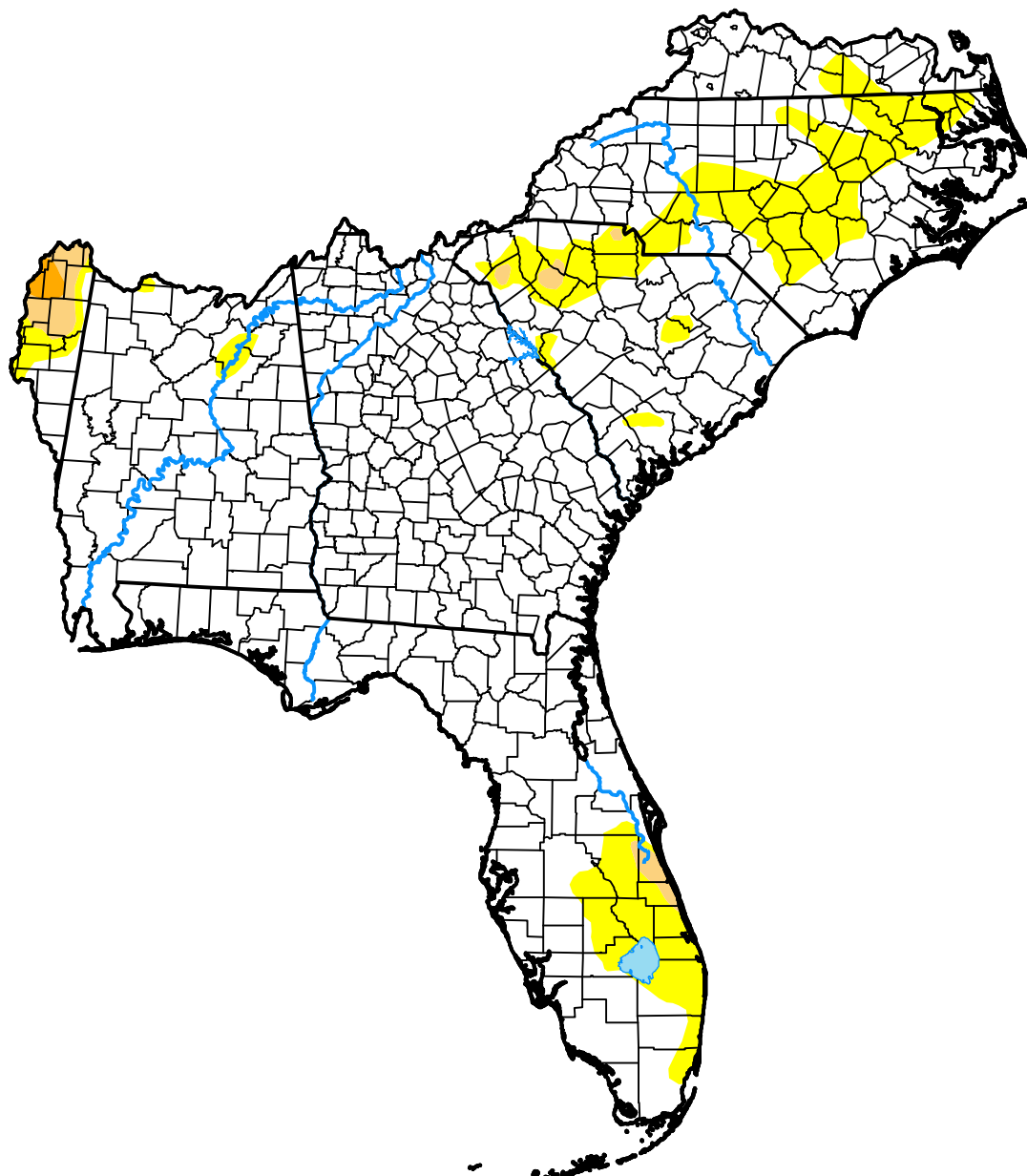
# U.S. Drought Monitor Southeast RFC

**August 23, 2022**  
(Released Thursday, Aug. 25, 2022)

Valid 8 a.m. EDT

Drought Conditions (Percent Area)

	None	D0-D4	D1-D4	D2-D4	D3-D4	D4
<b>Current</b>	85.93	14.07	1.44	0.24	0.00	0.00
<b>Last Week</b> <i>08-16-2022</i>	76.31	23.69	2.85	0.83	0.00	0.00
<b>3 Months Ago</b> <i>05-24-2022</i>	60.68	39.32	12.45	3.99	0.00	0.00
<b>Start of Calendar Year</b> <i>01-04-2022</i>	60.74	39.26	17.78	1.53	0.00	0.00
<b>Start of Water Year</b> <i>09-28-2021</i>	97.67	2.33	0.00	0.00	0.00	0.00
<b>One Year Ago</b> <i>08-24-2021</i>	97.62	2.38	0.00	0.00	0.00	0.00



**Intensity:**



The Drought Monitor focuses on broad-scale conditions. Local conditions may vary. For more information on the Drought Monitor, go to <https://droughtmonitor.unl.edu/About.aspx>

**Author:**

Deborah Bathke  
National Drought Mitigation Center



[droughtmonitor.unl.edu](https://droughtmonitor.unl.edu)