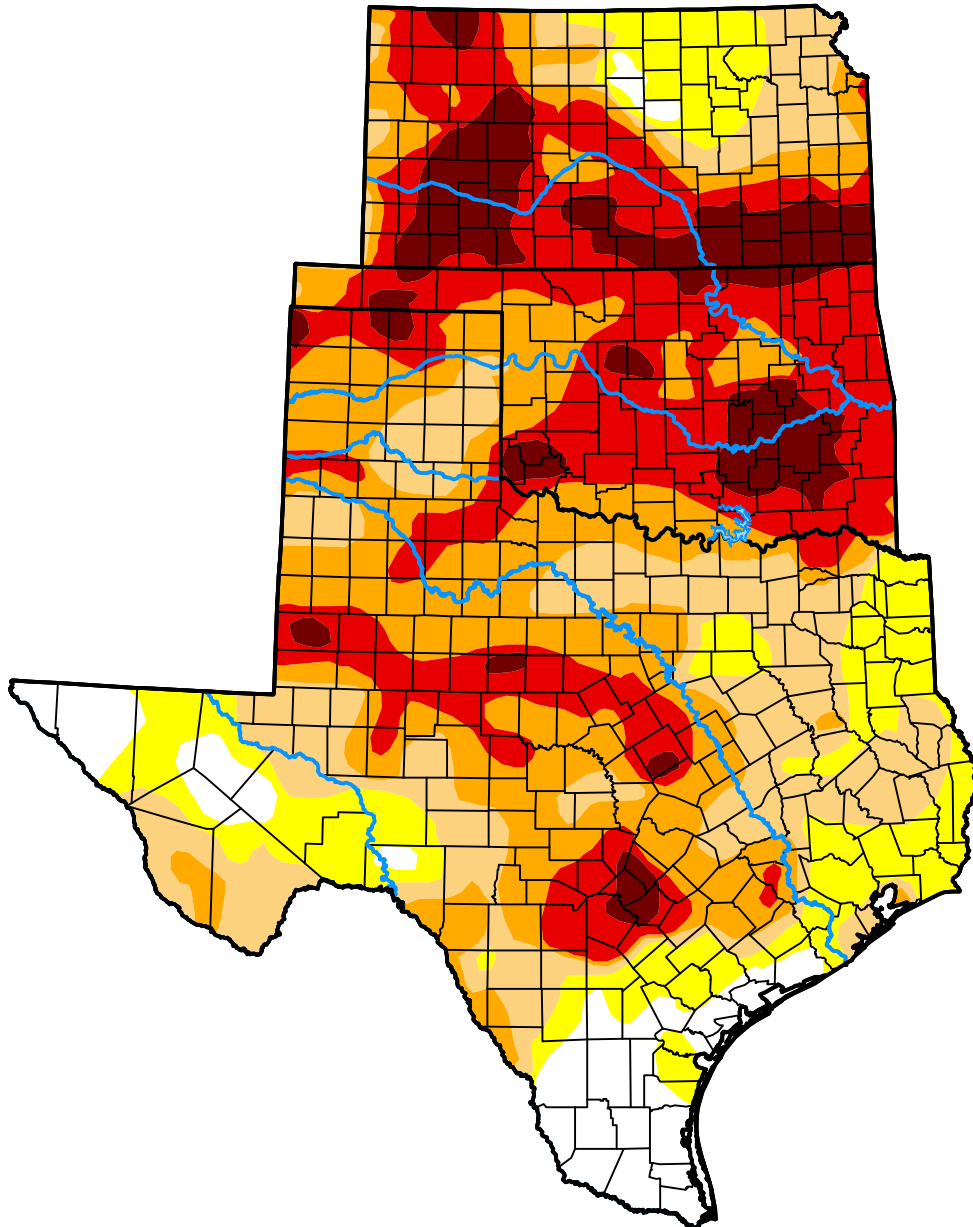


U.S. Drought Monitor USDA Southern Plains Climate Hub

October 4, 2022
(Released Thursday, Oct. 6, 2022)
Valid 8 a.m. EDT

Drought Conditions (Percent Area)

	None	D0	D1	D2	D3	D4
Current	7.24	14.08	20.87	25.63	23.07	9.10
Last Week <i>09-27-2022</i>	9.80	18.21	22.87	22.33	18.32	8.47
3 Months Ago <i>07-05-2022</i>	16.18	14.80	18.67	17.20	22.59	10.55
Start of Calendar Year <i>01-04-2022</i>	10.63	13.57	26.46	31.48	17.86	0.00
Start of Water Year <i>09-27-2022</i>	9.80	18.21	22.87	22.33	18.32	8.47
One Year Ago <i>10-05-2021</i>	46.86	33.47	14.99	4.19	0.49	0.00



Intensity:

- None
- D0 Abnormally Dry
- D1 Moderate Drought
- D2 Severe Drought
- D3 Extreme Drought
- D4 Exceptional Drought

The Drought Monitor focuses on broad-scale conditions. Local conditions may vary. For more information on the Drought Monitor, go to <https://droughtmonitor.unl.edu/About.aspx>

Author:

Brad Pugh
CPC/NOAA



droughtmonitor.unl.edu