

U.S. Drought Monitor

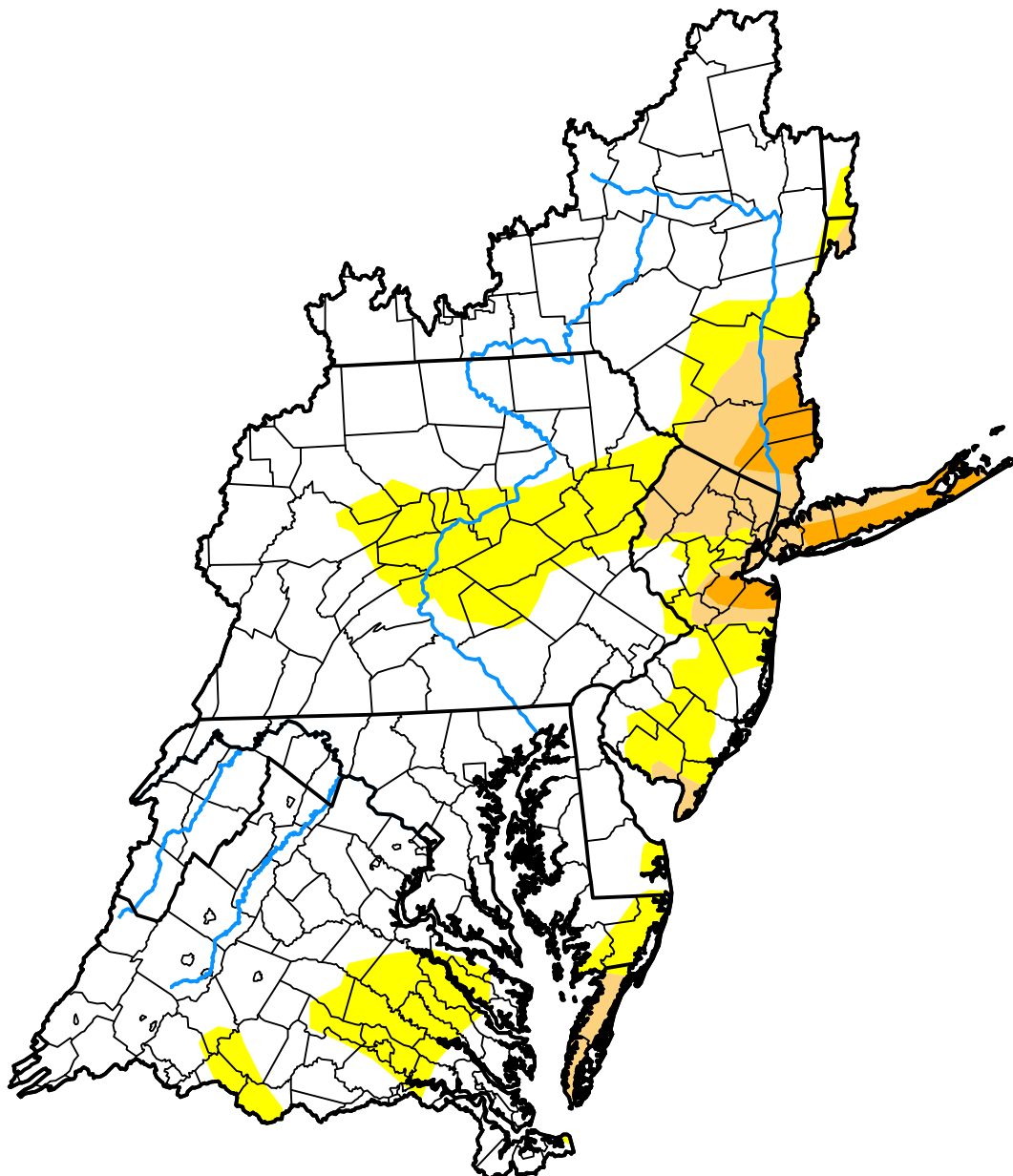
Mid Atlantic Watershed

October 4, 2022
 (Released Thursday, Oct. 6, 2022)

Valid 8 a.m. EDT

Drought Conditions (Percent Area)

	None	D0	D1	D2	D3	D4
Current	75.01	16.98	5.70	2.32	0.00	0.00
Last Week <i>09-27-2022</i>	58.34	26.14	11.79	3.73	0.00	0.00
3 Months Ago <i>07-05-2022</i>	84.12	15.75	0.12	0.00	0.00	0.00
Start of Calendar Year <i>01-04-2022</i>	61.60	36.28	2.12	0.00	0.00	0.00
Start of Water Year <i>09-27-2022</i>	58.34	26.14	11.79	3.73	0.00	0.00
One Year Ago <i>10-05-2021</i>	96.95	3.05	0.00	0.00	0.00	0.00



Intensity:

- None
- D0 Abnormally Dry
- D1 Moderate Drought
- D2 Severe Drought
- D3 Extreme Drought
- D4 Exceptional Drought

The Drought Monitor focuses on broad-scale conditions. Local conditions may vary. For more information on the Drought Monitor, go to <https://droughtmonitor.unl.edu/About.aspx>

Author:

Brad Pugh
 CPC/NOAA

