

U.S. Drought Monitor

Arkansas-White-Red Watershed

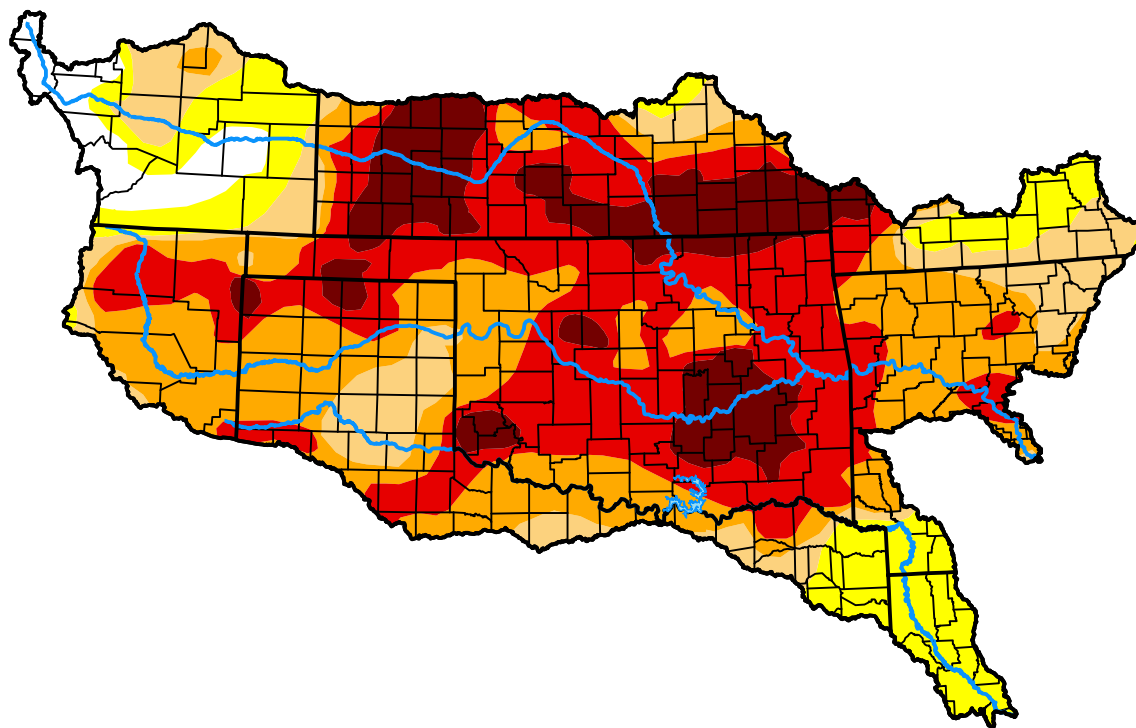
October 4, 2022

(Released Thursday, Oct. 6, 2022)

Valid 8 a.m. EDT

Drought Conditions (Percent Area)

| | None | D0 | D1 | D2 | D3 | D4 |
|--|-------|-------|-------|-------|-------|-------|
| Current | 3.75 | 12.45 | 12.63 | 27.80 | 29.84 | 13.53 |
| Last Week <i>09-27-2022</i> | 7.34 | 13.12 | 18.81 | 25.33 | 22.83 | 12.57 |
| 3 Months Ago <i>07-05-2022</i> | 21.06 | 24.95 | 23.94 | 11.31 | 13.43 | 5.32 |
| Start of Calendar Year <i>01-04-2022</i> | 17.80 | 6.42 | 12.59 | 36.83 | 26.36 | 0.00 |
| Start of Water Year <i>09-27-2022</i> | 7.34 | 13.12 | 18.81 | 25.33 | 22.83 | 12.57 |
| One Year Ago <i>10-05-2021</i> | 27.67 | 36.64 | 26.25 | 8.57 | 0.87 | 0.00 |



Intensity:



The Drought Monitor focuses on broad-scale conditions. Local conditions may vary. For more information on the Drought Monitor, go to <https://droughtmonitor.unl.edu/About.aspx>

Author:

Brad Pugh
CPC/NOAA



droughtmonitor.unl.edu