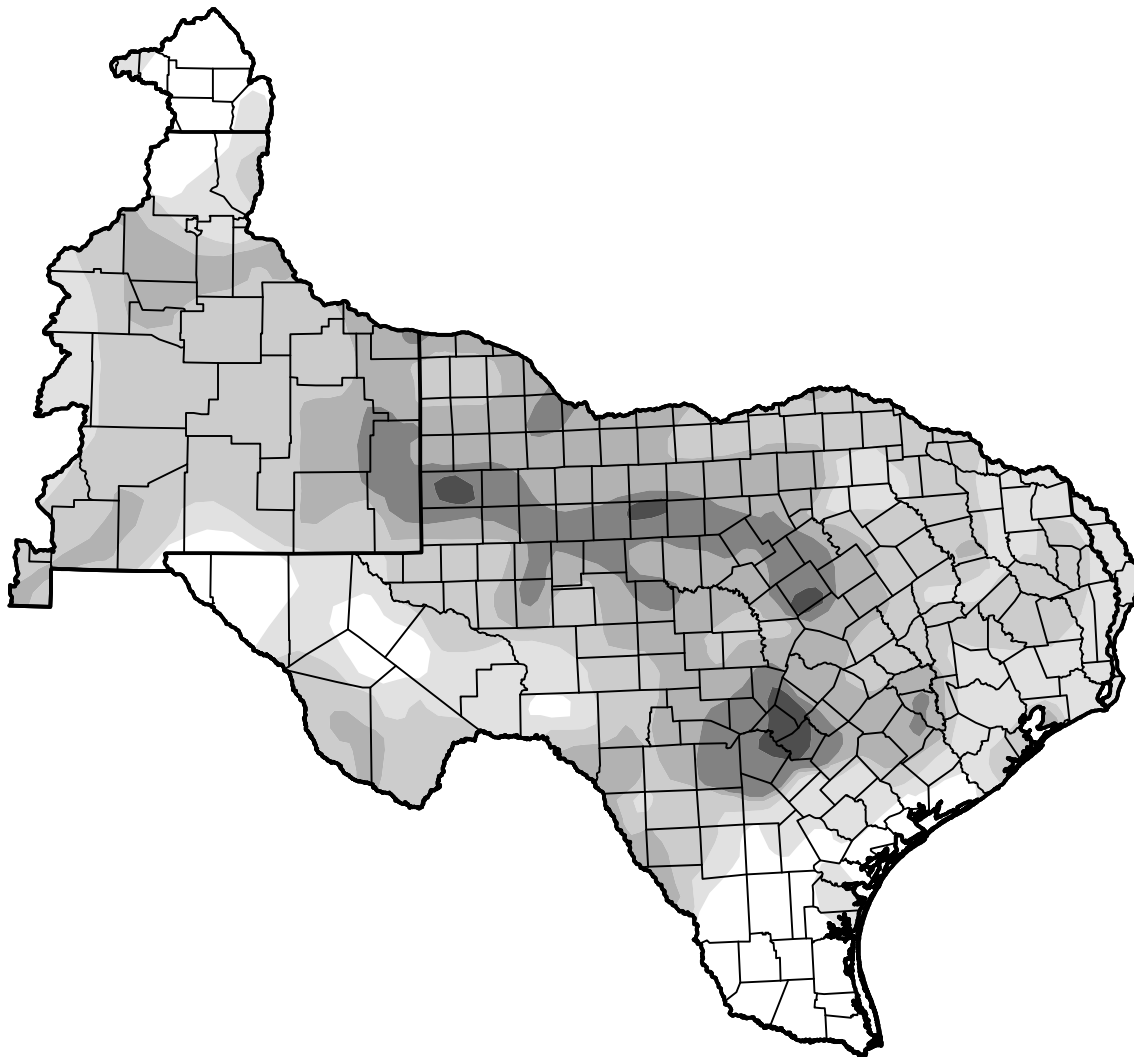


# U.S. Drought Monitor West Gulf RFC

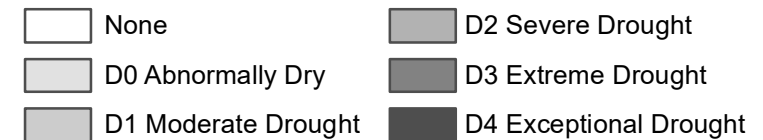
**October 4, 2022**  
(Released Thursday, Oct. 6, 2022)  
Valid 8 a.m. EDT



*Drought Conditions (Percent Area)*

	None	D0	D1	D2	D3	D4
<b>Current</b>	12.39	18.63	34.78	24.16	9.00	1.03
<b>Last Week</b> <i>09-27-2022</i>	13.45	24.86	33.26	20.40	7.13	0.90
<b>3 Months Ago</b> <i>07-05-2022</i>	2.10	7.86	14.46	25.05	36.19	14.33
<b>Start of Calendar Year</b> <i>01-04-2022</i>	6.41	11.58	30.62	39.75	11.64	0.00
<b>Start of Water Year</b> <i>09-27-2022</i>	13.45	24.86	33.26	20.40	7.13	0.90
<b>One Year Ago</b> <i>10-05-2021</i>	49.18	29.07	11.42	7.75	2.58	0.00

***Intensity:***



*The Drought Monitor focuses on broad-scale conditions. Local conditions may vary. For more information on the Drought Monitor, go to <https://droughtmonitor.unl.edu/About.aspx>*

***Author:***

Brad Pugh  
CPC/NOAA

